

HUMAN SDK

Support for iOS, Android, and visionOS

Sophisticated bots often pretend to be using mobile apps. Without an SDK, organizations are presented with a stark decision: they can either allow all traffic tagged as mobile or risk permanently blocking some real users. Assuming a business does not want to block legitimate mobile traffic, this means allowing automated requests that pretend to come from mobile devices. Mitigating mobile-borne threats requires an SDK integration.

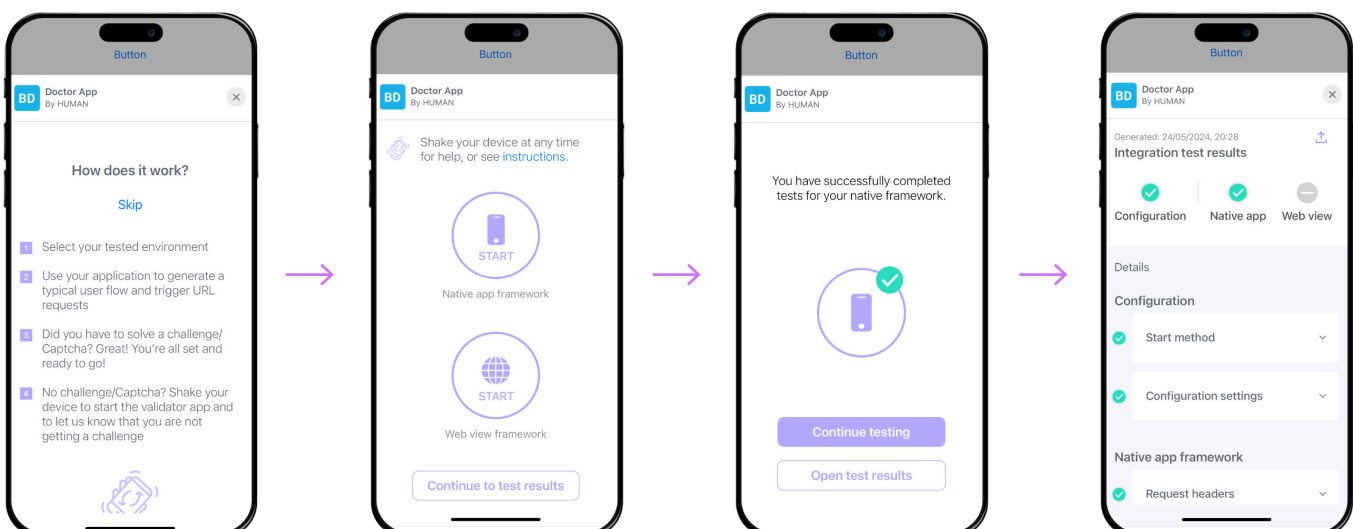
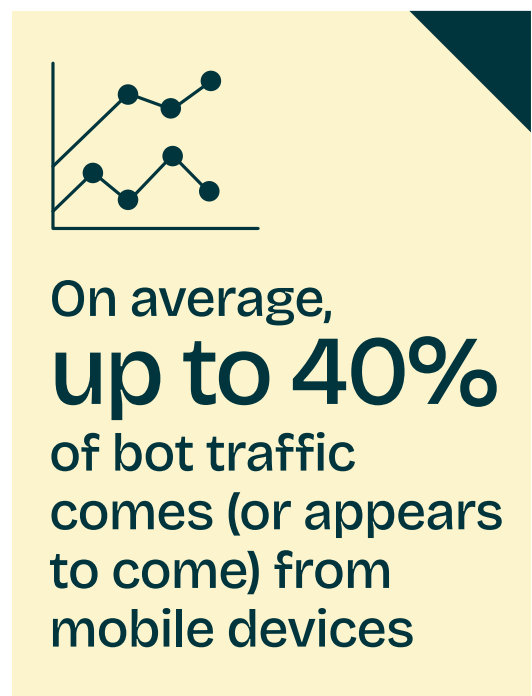
HUMAN SDK

HUMAN's SDK provides native signals that allow us to mitigate bot traffic on mobile devices. It also allows us to enforce additional detections to risky profiles, such as our user-friendly verification challenge, Human Challenge.

The Human Defense Platform identifies and mitigates malicious bot attacks with unmatched scale, speed, and decision precision. Using advanced machine learning models, intelligent fingerprinting, and predictive methods, the solution provides precise threat decisions to protect digital organizations across their application and account surfaces.

SDK Doctor App

HUMAN's SDK Doctor App is a tool that helps customers to easily install the SDK and verify the SDK integration. When the Doctor App is enabled, it simulates a typical user flow in the application and guides the developer to gather the information necessary to test the integration.



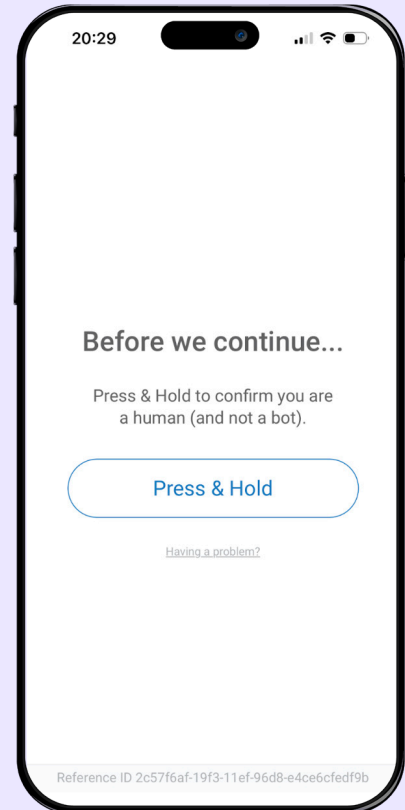
Seamless Challenge Experience

Once the SDK is deployed, HUMAN's proprietary verification challenge – Human Challenge – is automatically enabled. The challenge is served to 0.01% of risky profiles, allowing human users to exonerate themselves by pressing and holding the button.

Supported Versions

HUMAN's SDK supports native, web, and hybrid apps

- iOS 11 and higher
- Android 5.0 (API level 21) and higher
- Android Studio 4.2 and higher
- Xcode 13 and higher
- Swift 5.5 and higher
- Objective-C
- visionOS



How It Works

HUMAN's SDK constantly profiles and evaluates device behavior to ensure that the connections to your mobile APIs and services are genuine.



INTEGRATE

Integrate the SDK into your application and set secure HTTP headers that are added to all HTTP and HTTPS requests made by the mobile app to the origin server



COLLECT

Collect data on app activity, interactions, performance, and device or other IDs



DETECT

Detect malicious automated traffic, including bots pretending to be mobile apps



MITIGATE

Mitigate bot traffic according to customizable threat response policies

HUMAN is a leading cybersecurity company committed to protecting the integrity of the digital world. We ensure that every digital interaction, transaction, and connection is authentic, secure, and human. HUMAN verifies 20 trillion digital interactions, providing unparalleled telemetry data to enable rapid, effective responses to the most sophisticated threats. Recognized by our customers as a G2 Leader, HUMAN continues to set the standard in cybersecurity. For more information, visit www.humansecurity.com